



St. Vincent Catholic Charities Children's Home

Join us to help raise funds to build a new Children's Pavilion at the St. Vincent Catholic Charities (STVCC) Children's Home in Lansing.

Participate in a scramble at Emerald Golf Course where all proceeds will go towards the construction of the Children's Pavilion at the STVCC Children's Home.

- \$75 per golfer or \$300 per foursome
- Includes golf, cart, lunch, dinner, and prizes
- Hole sponsorships available
- Prizes available for Skins Game, Longest Drive, Longest Putt, First Place for Low Score Team, Hole in One Contest, First Shot Closest to Pin, Second Shot Closest to Pin-all on specified holes.
- 50/50 Raffle and Silent Auction.

REGISTRATION FORM

Name and phone of Foursome or Hole Sponsor or Prize Donor or Silent Auction Item Donor	Golf & Dinner \$75	Dinner Only \$25	Hole Sponsor \$100	Foursome & Hole Sponsor \$350	Sub-Total
Team Captain:					

CHECK _____ CASH _____ CONTACT PHONE# _____ TOTAL _____

*Sponsor Information: Name, Address & Phone _____

*Signage to read _____



ST. VINCENT CATHOLIC CHARITIES CHILDREN'S HOME PAVILION GOLF TOURNAMENT

*Sunday, September 27, 2015
Emerald Golf Course*



St. Vincent Catholic Charities Children's Home

Who They Are

The St. Vincent Catholic Charities (STVCC) Children's Home offers Long Term and Short Term Residential Care, and 30 Day Clinical Assessment for children ages five to seventeen. The assessment and stabilization services for children in crisis include individual and family therapy, an on grounds educational program for children unable to attend public schools, and twenty four hour counseling and role modeling.

Many of the children living at the STVCC Children's Home suffer from severe abuse and neglect, and find it hard to trust adults. STVCC staff care for the children, assess their needs and recommend a living situation for the children that will help nurture a stable living environment and foster healthy relationships.

Located at
2800 W. Willow St.
Lansing, MI 48917

EVENT DETAILS

Sunday, September 27, 2015
Emerald Golf Course
2300 W. Maple Rapids Rd.
St. Johns, MI
989-224-6287

FOUR-PERSON SCRAMBLE:
SCRAMBLE, EACH PLAYER MOVES TO BEST SHOT IN FOURSOME

ENTRY FEE:
\$75 PER GOLFER OR \$300 PER FOURSOME INCLUDES GOLF, CART, HOLE PRIZES, LUNCH AND DINNER. SINGLE GOLFERS WILL BE PLACED IN A FOURSOME.

SPECIAL:
\$350 INCLUDES A FOURSOME ENTRY FEE & HOLE SPONSOR FEE.

REGISTRATION DEADLINE:
NOON ON MONDAY, SEPTEMBER 21ST

AGENDA:

9:00 AM

REGISTRATION & CONTINENTAL BREAKFAST

10:00 A.M.

SHOTGUN START AT TURN: HOT DOGS, CHIPS AND DRINK

3:00 P.M.

PULLED PORK DINNER AND AWARDING OF PRIZES



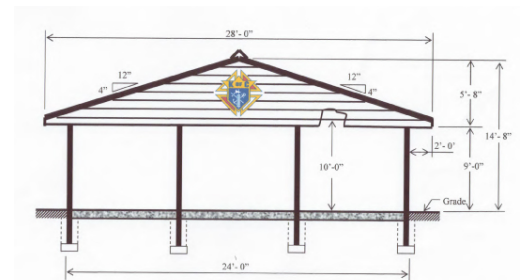
Contact Information

For more information, please contact Jim Sigmon at (517) 669-5020 or Email at FASigjrs@aol.com.

Please make all checks payable to: Msgr Stotenbur Council 7237
 *Insert "Pavilion Golf" on memo line of check

Registration forms and checks need to be mailed to: Jim Sigmon
 1228 Alpine Drive
 DeWitt, MI 48820

Proposed Pavilion Design



South Elevation View